

# Alaska Department of Fish and Game

Habitat Section  
Southeast Region



## 114-27-10300 Tributary 5

## ADDITION

**Water body name:**

**Survey date:** 6/15/2022

**Quad:** Juneau A-4

**Species & Lifestage:**

**Upper Reach Latitude:** 58.051797 **Longitude:** -135.288189

**Survey crew:** FC, RR

**Lower Reach Latitude:** 58.052015 **Longitude:** -135.288489

**Findings:** We surveyed this uncataloged stream using a backpack electrofisher and GPS and captured juvenile coho salmon. The tributary stream descends from a hillside into a low-gradient channel dominated by sand and fine organic sediment, where pools can become disconnected at low flows (Table 1; Figures 1, 2).

**Recommendations:** Add this uncataloged stream to the anadromous waters catalog for rearing coho salmon (Figure 3).

**Nomination:** Pending

Table 1.—114-27-10300 tributary 5 survey data.

| Waypoint | Latitude  | Longitude   | Notes   | Stream<br>Width ft | Stream<br>Substrate    | Habitat<br>Features | Gradient<br>% | Sample<br>Effort | Sample<br>Results |
|----------|-----------|-------------|---|--------------------|------------------------|---------------------|---------------|------------------|-------------------|
| 761      | 58.051585 | -135.288275 | Tributary on river-right of Spasski. Has little flow and stagnant water. This portion could be disconnected due to large woody debris and low water. Probably accessible to coho at higher flows. Advancing downstream. | 10-12              | Fine Organic<br>Sand   | SWD                 | 1-2           | EF               | No Fish           |
| 762      | 58.051801 | -135.288213 | Young-of-year CO capture. End of survey on this tributary.  |                    |                        |                     |               | EF               | 4 CO              |
| 763      | 58.052202 | -135.288034 | Tributary is very high in gradient; marginal habitat for coho.  | 6-8                | Cobble<br>Large Gravel |                     | 18-20         | EF               | No Fish           |



Figure 1.—Juvenile coho salmon captured at waypoint 762.



Figure 2.—Channel at waypoint 761.



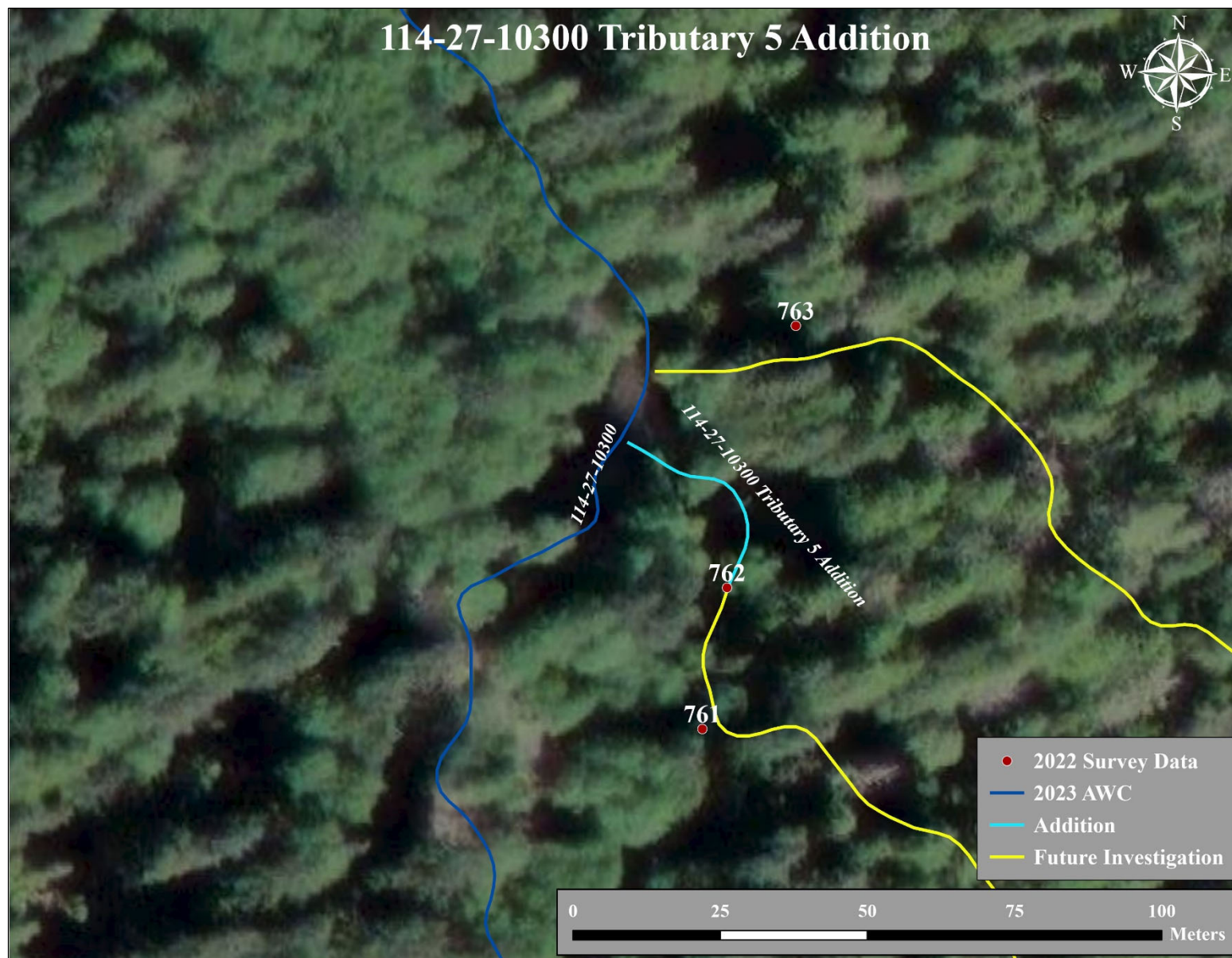


Figure 3.–114-27-10300 tributary 5 addition map.